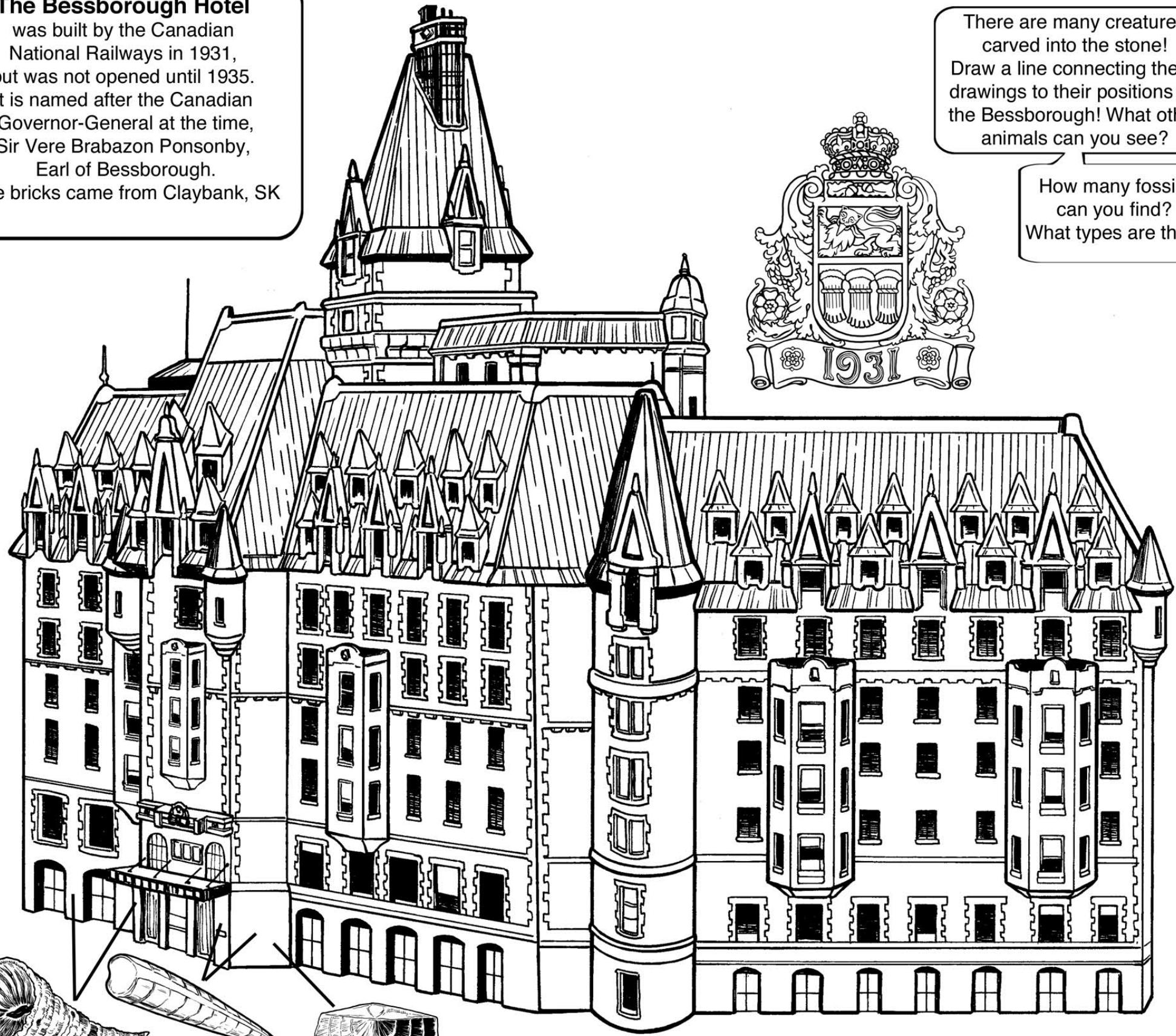
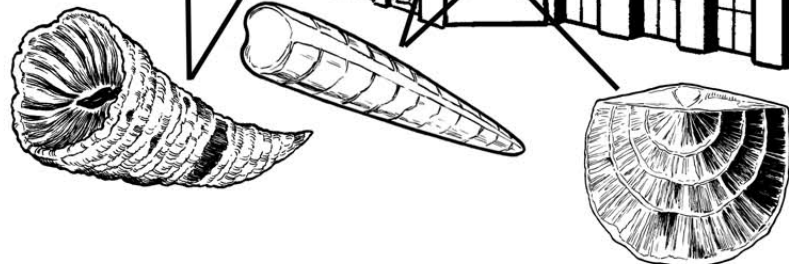
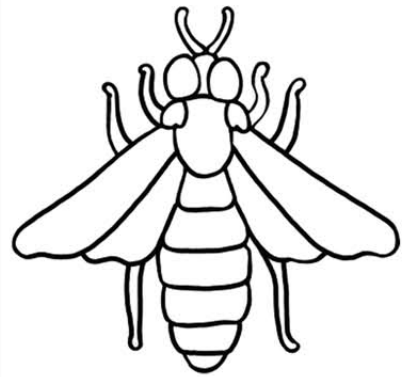
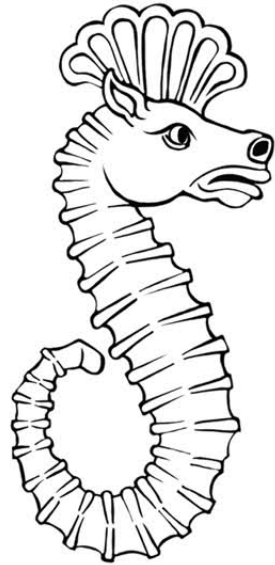
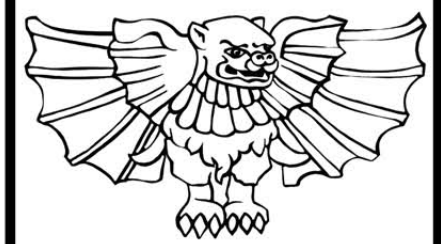


The Bessborough Hotel
 was built by the Canadian
 National Railways in 1931,
 but was not opened until 1935.
 It is named after the Canadian
 Governor-General at the time,
 Sir Vere Brabazon Ponsonby,
 Earl of Bessborough.
 The bricks came from Claybank, SK



There are many creatures
 carved into the stone!
 Draw a line connecting these
 drawings to their positions on
 the Bessborough! What other
 animals can you see?

How many fossils
 can you find?
 What types are they?



Even the stone benches in front have fossils.
 Find the Rugose on the Kiwanis Memorial!