

The **rocks** and **minerals** in the first floor hallways are different colours depending on what they are made of.



wâpiskâw



osâwi-mihkwâw



sîpihkâw



mihko-sîpihkâw



wâpikwanîwinâkwan

One mineral of each colour?



mihkwâw



askihtakwâw



osâwâw



THE MUSEUM OF  
**NATURAL  
SCIENCES**

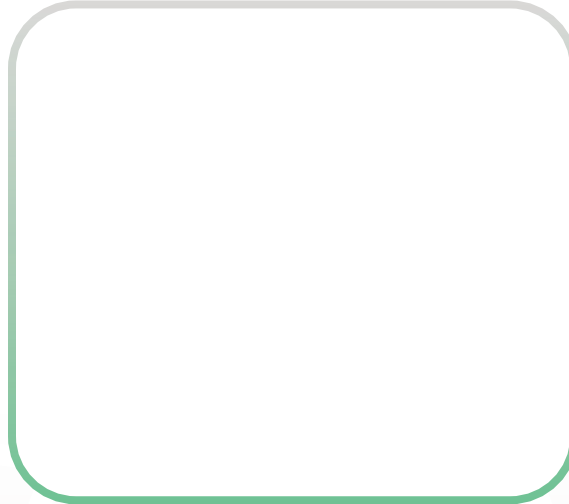
follow and connect with the museum



facebook @usaskmnaturalsciences  
instagram @mnaturalsciences\_usask  
twitter @usaskmnatsci

museum.naturalsciences@usask.ca  
306-966-5729  
artsandscience.usask.ca/museumofnaturalsciences/

Thank you for visiting the  
Museum of Natural Sciences  
Can you **draw** or **describe** what you  
liked best at the museum?



## SCAVENGER HUNT FOR THE Budding Natural Scientist



There are four replicas of large  
**prehistoric reptiles**  
at the entrance of  
the museum.



*Tyrannosaurus  
rex*



*Mosasaurus*



*Triceratops*

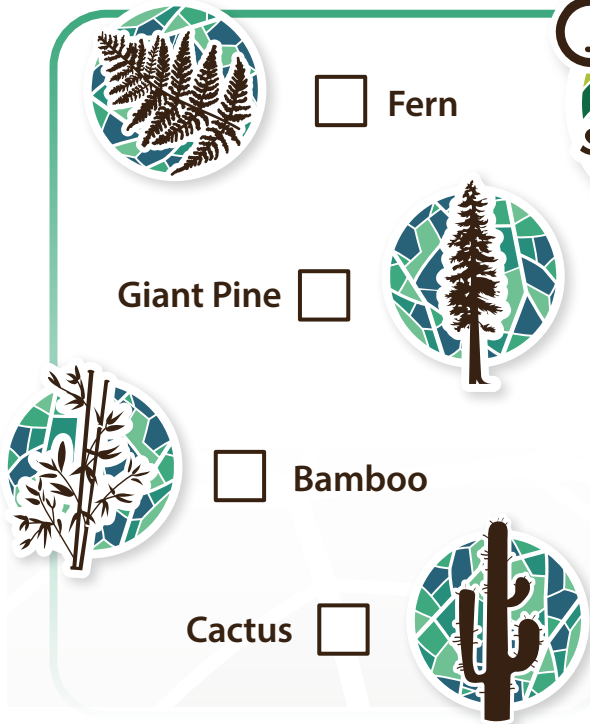


*Pteranodon*

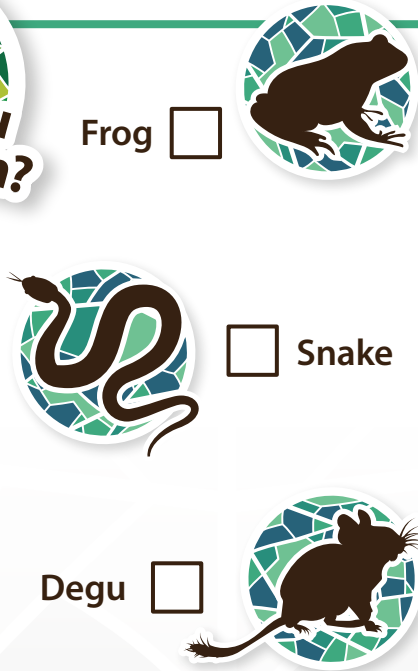


UNIVERSITY OF  
SASKATCHEWAN

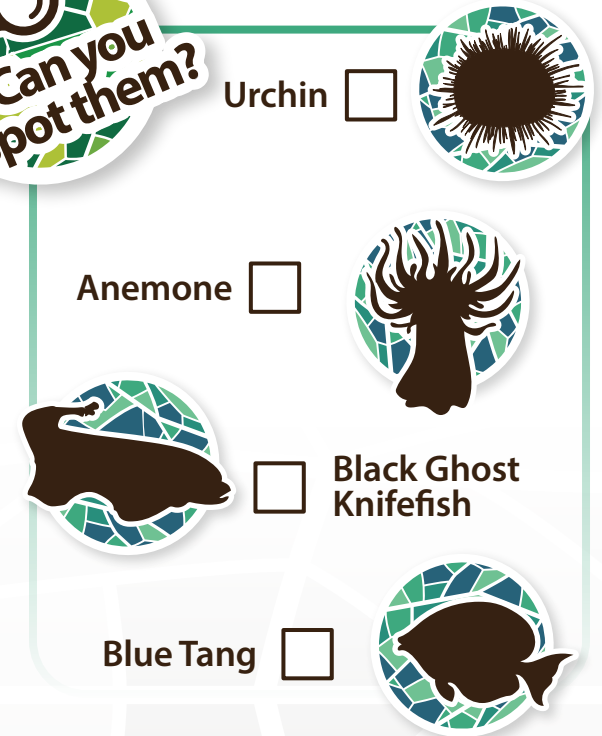
Plants have changed through time just like animals have.



These **live animals** are examples of amphibians, reptiles, birds, and mammals.



The **fish tanks** show different watery environments.



We have lots of unique **rocks** and **minerals** in the first floor hallway past the big tree.



Cube-Shaped Mineral



Hexagonal-Prism-Shaped Mineral

Meteorite

