

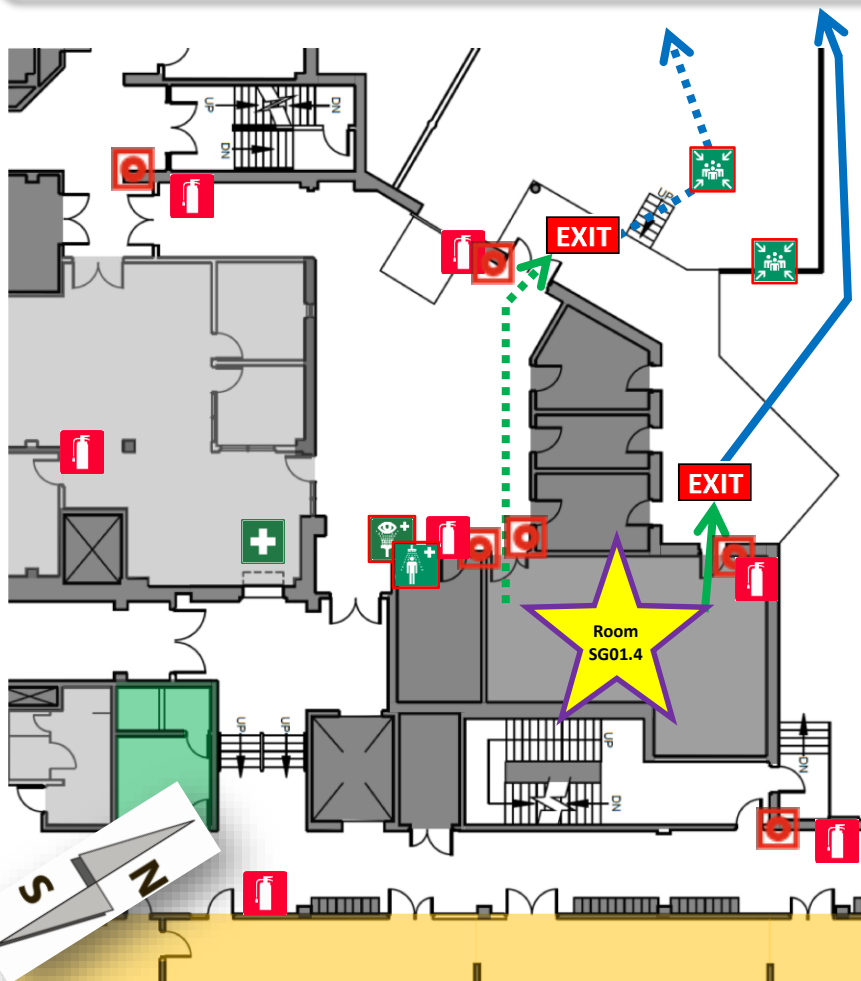
# Emergency Evacuation and Response

**In the Event of an Emergency Call 911 or 306-966-5555**

Description of this Location: Thorvaldson Building, 110 Science Place, Room SG01.4

## Evacuating from Thorvaldson Building Chemical Storage and Dispensing Room SG01.4:

Evacuate immediately through the room's north exit door. Once outside go around the loading dock ramp and go west to gather by Parking Lot G, east of the Arts Building.



### Medical Emergency:

1. Try ensuring the scene is free from further hazard and risk.
2. **Call 911 (or 9-911) to report all medical emergencies;** Protective Services (306-966-5555) is notified of all emergency 911 calls originating from on campus and will assist in responding to emergencies on campus.
3. **Provide first aid and/or seek assistance from people formally trained in providing emergency first aid.**

### Severe Weather Lockdown:

1. Upon receipt of an **Alertus** severe weather lockdown notification **cease activities and seek safe shelter** in designated interior rooms, or seek shelter in place if possible.
2. **Close blinds and stay away from outside windows.**
3. Call **306-966-5555** to report severe weather.
4. Watch for further **Alertus** messages.

### Evacuation Emergency:

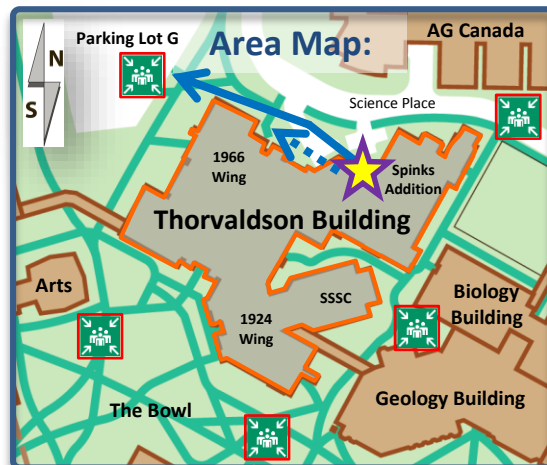
1. Upon discovery of the need to evacuate **pull the fire alarm and evacuate** (911 emergency responders are automatically notified as soon as the alarm sounds). **Or,**
2. **Upon hearing the fire alarm** and/or seeing emergency strobe lights **for more than 10 seconds** remain calm and **evacuate in an orderly fashion** using the primary evacuation route.
3. **Report to the designated Marshalling Area** (see below).
4. If you pull the fire alarm or have information about the alarm report this directly to emergency responders.

### Violent Threat Lockdown:

1. Upon receipt of an **Alertus** violent threat lockdown notification, **cease activities and seek safe shelter.**
2. **Once safe shelter is found, call 911.**
3. Put phones on silent; watch for additional **Alertus** messages.
4. Remain in lockdown until cleared by ER personnel.

### Legend:

	<b>You Are Here</b>		<b>Fire Alarm Pull Stations</b>
	<b>First Aid Kits</b> – refer to the map above for the nearest first aid kit. If the symbol does not appear then go to <b>Chem Stores, Room G46.</b>		<b>Fire Extinguishers</b>
	<b>Automated External Defibrillator (AED)</b> – are in every Protective Services patrol vehicle		<b>Marshalling Areas</b> – evacuation gathering points
	<b>Evacuation Exit</b> – use closest exit whenever possible during an evacuation; follow primary route and posted exit signs in the building; report to the nearest Marshalling Area		<b>Eye Wash</b>
			<b>Safety Shower</b>
			<b>Shelter in Place</b>
			<b>Safe Area</b>
			<b>Not Secure or Inaccessible</b>
<b>Primary Evacuation Route</b>		<b>Secondary Evacuation Route</b>	



### Alertus:

To register for the Alertus emergency notification mobile application please visit:  
<http://www.usask.ca/protectiveservices/usafe/>

### Further Information:

The points provided above are only for basic reference; for more detailed information see the Thorvaldson Building Local Emergency Response Plan and Building Evacuation Plan at:  
<http://artsandscience.usask.ca/fpm/>