

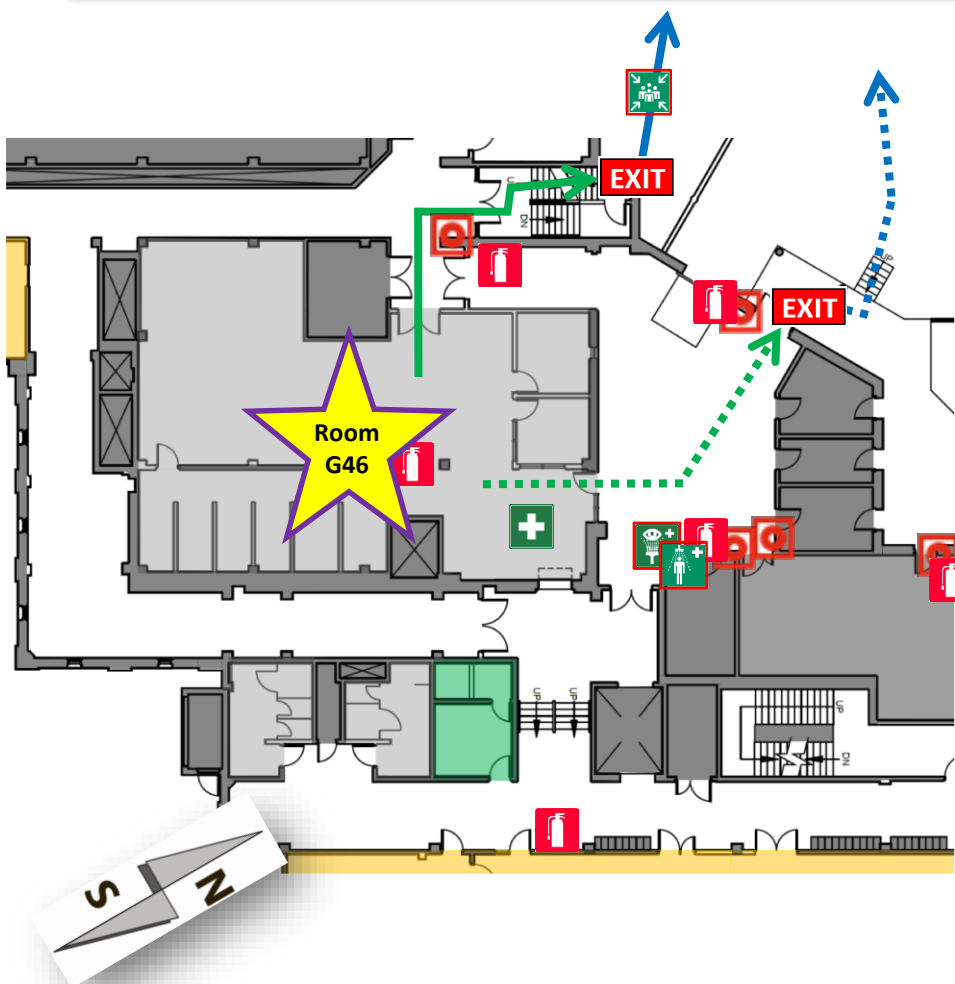
Emergency Evacuation and Response

In the Event of an Emergency Call 911 or 306-966-5555

Description of this Location: Thorvaldson Building, 110 Science Place, Room G46

Evacuating from Thorvaldson Building Chemical Stores, Room G46:

Evacuate straight through this door to the north exit on the right side. Once outside go west to gather at the Parking Lot G Marshalling Area, east of the Arts Building.



Medical Emergency:

1. Try ensuring the scene is free from further hazard and risk.
2. **Call 911 (or 9-911) to report all medical emergencies; Protective Services (306-966-5555) is notified of all emergency 911 calls originating from on campus and will assist in responding to emergencies on campus.**
3. **Provide first aid and/or seek assistance from people formally trained in providing emergency first aid.**

Severe Weather Lockdown:

1. Upon receipt of an **Alertus** severe weather lockdown notification **cease activities and seek safe shelter** in designated interior rooms, or seek shelter in place if possible.
2. **Close blinds and stay away from outside windows.**
3. Call **306-966-5555** to report severe weather.
4. Watch for further **Alertus** messages.

Evacuation Emergency:

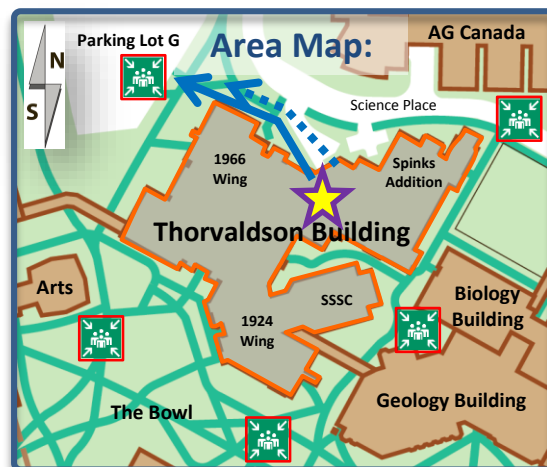
1. Upon discovery of the need to evacuate **pull the fire alarm and evacuate** (911 emergency responders are automatically notified as soon as the alarm sounds). **Or,**
2. **Upon hearing the fire alarm** and/or seeing emergency strobe lights **for more than 10 seconds** remain calm and **evacuate in an orderly fashion** using the primary evacuation route.
3. **Report to the designated Marshalling Area** (see below).
4. If you pull the fire alarm or have information about the alarm report this directly to emergency responders.

Violent Threat Lockdown:

1. Upon receipt of an **Alertus** violent threat lockdown notification, **cease activities and seek safe shelter.**
2. **Once safe shelter is found, call 911.**
3. Put phones on silent; watch for additional **Alertus** messages.
4. Remain in lockdown until cleared by ER personnel.

Legend:

	You Are Here		Fire Alarm Pull Stations
	First Aid Kits – refer to the map above for the nearest first aid kit. If the symbol does not appear then go to Chem Stores, Room G46.		Fire Extinguishers
	Automated External Defibrillator (AED) – are in every Protective Services patrol vehicle		Marshalling Areas – evacuation gathering points
	Evacuation Exit – use closest exit whenever possible during an evacuation; follow primary route and posted exit signs in the building; report to the nearest Marshalling Area		Eye Wash
			Safety Shower
			Shelter in Place
			Safe Area
			Not Secure or Inaccessible
	Primary Evacuation Route		Secondary Evacuation Route



Alertus:

To register for the Alertus emergency notification mobile application please visit:
<http://www.usask.ca/protectiveservices/usafe/>

Further Information:

The points provided above are only for basic reference; for more detailed information see the Thorvaldson Building Local Emergency Response Plan and Building Evacuation Plan at:
<http://artsandscience.usask.ca/fpm/>