

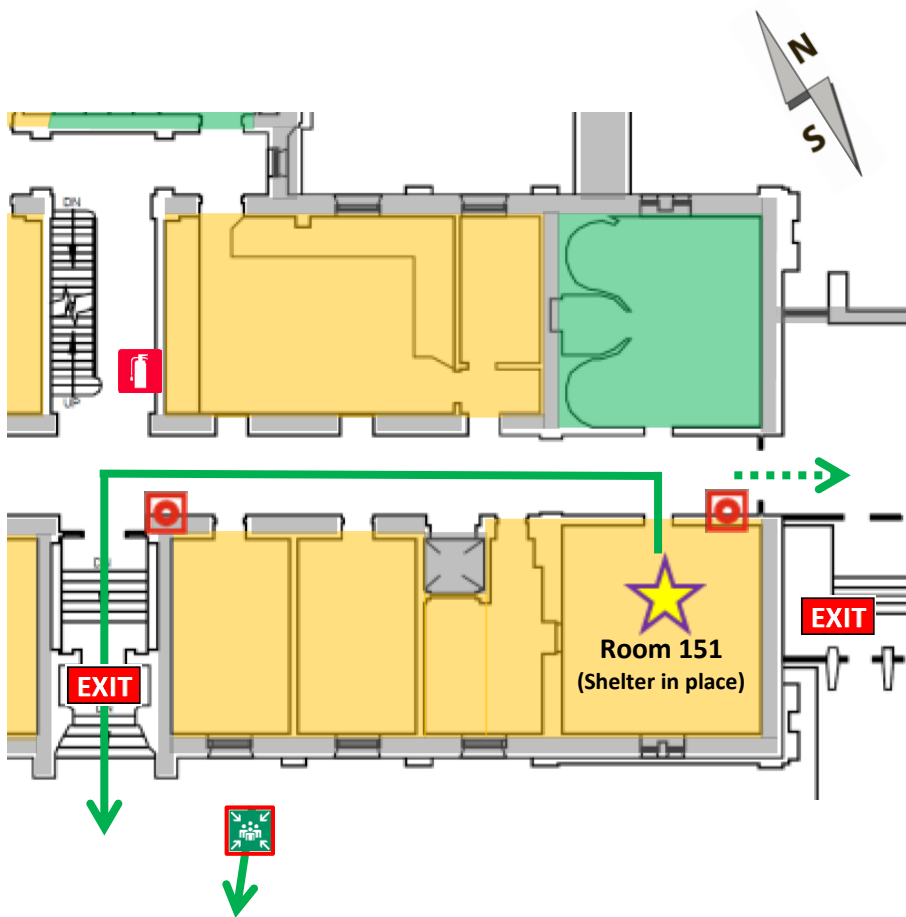
# Emergency Evacuation and Response

**In the Event of an Emergency Call 306-966-5555 (or 911)**

**Description of this Location: Physics Building, 116 Science Place, First Floor, Room 151**

## Evacuating from this Location:

Through the door **turn left**, follow the hallway to the old main exit, **turn left** and evacuate to the south of the Physics Building, and gather in the Bowl.



### Medical Emergency:

1. Try to ensure the scene is free from further hazard.
2. Call Campus Safety at **306-966-5555** to report; Campus Safety will help to assess the situation and provide immediate assistance. Call **911** as necessary.
3. Solicit assistance from others formally trained in providing emergency first aid.

### Evacuation Emergency:

1. Upon discovery of the need to evacuate **pull the fire alarm and evacuate** (emergency responders are notified when the alarm sounds).
2. Upon hearing the fire alarm (>10 sec) **remain calm** and evacuate in an orderly fashion using the primary route.
3. Report to the nearest Marshalling Area.
4. If you pull the fire alarm or have information about the alarm report to emergency responders.

### Severe Weather Lockdown:

1. Upon receipt of **USafe** notification cease work activities and seek safe shelter in designated interior rooms, or seek shelter in place if possible.
2. Call **306-966-5555** to report severe weather.
3. Watch for further **USafe** messages.

### Violent Threat Lockdown:

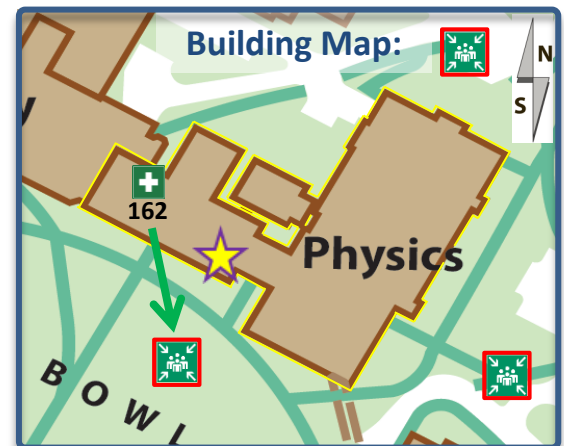
1. Cease working, seek safe shelter and call **911**.
2. Lock door(s), cover windows, turn off lights & hide.
3. Put phones on silent; watch for **USafe** messages.
4. Remain hidden until cleared by emergency response personnel.

### Legend:

- You Are Here**
- First Aid Kits** – refer to the map above for the nearest first aid kit. If the symbol does not appear then go to the Main Office, Room 162.
- Automated External Defibrillator (AED)** – located in every Campus Safety patrol vehicle.
- Evacuation Exit** – use closest exit whenever possible during an evacuation; follow primary route and posted exit signs in the building; report to the nearest Marshalling Area.
- Fire Alarm Pull Stations**
- Fire Extinguishers**
- Marshalling Areas** – evacuation gathering points
- Lockable Rooms** – shelter in place
- Non-Lockable Rooms** – or otherwise not secure
- Secure Shelter Rooms**

Primary Evacuation Route

Secondary Evacuation Route



### USafe:

For more information and to register for the USafe emergency notification system visit:  
<http://www.usask.ca/usafe>

### Further Information:

The points provided above are only for basic reference; for more detailed information see the Department of Physics and Engineering Physics Local Emergency Response Plan and Building Evacuation Plan at:  
<http://artsandscience.usask.ca/physics/departments/documents.php>